

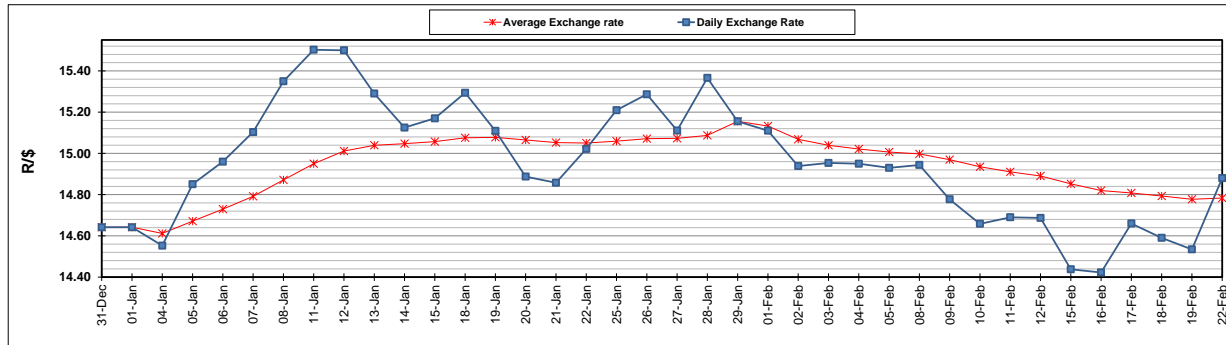
	PETROL 95 ULP	PETROL 93 ULP & LRP	DIESEL 0.05%	DIESEL 0.005%	ILL. PAR.
GAUTENG PUMP PRICE (SA c/l) AS FROM 03/02/2021	1,567.000	1,550.000	-	-	-
WHOLESALE PRICE (SA c/l) AS FROM 03/02/2021	-	-	1,358.420	1,360.820	798.688
SINGLE NATIONAL MAXIMUM RETAIL PRICE	-	-	-	-	1,008.000
BASIC FUEL PRICE - 22/02/2021 (SA c/l)	686.793	675.964	673.140	676.544	646.823
PRESS RELEASE CONTRIBUTION TO BFP 03/02/2021 - 22/02/2021 (SA c/l)	600.170	593.170	599.630	602.030	586.128
UNIT OVER/(UNDER) RECOVERY - 22/02/2021 (SA c/l)	(86.623)	(82.794)	(73.510)	(74.514)	(60.695)
AVERAGE BASIC FUEL PRICE 29/01/2021 - 22/02/2021	645.513	636.574	639.299	642.948	619.159
AVERAGE UNIT OVER/(UNDER) RECOVERY 29/01/2021 - 22/02/2021	(59.637)	(57.699)	(49.905)	(51.330)	(43.442)

### ANALYSIS MOVEMENT OF AVERAGE OVER/(UNDER) RECOVERY

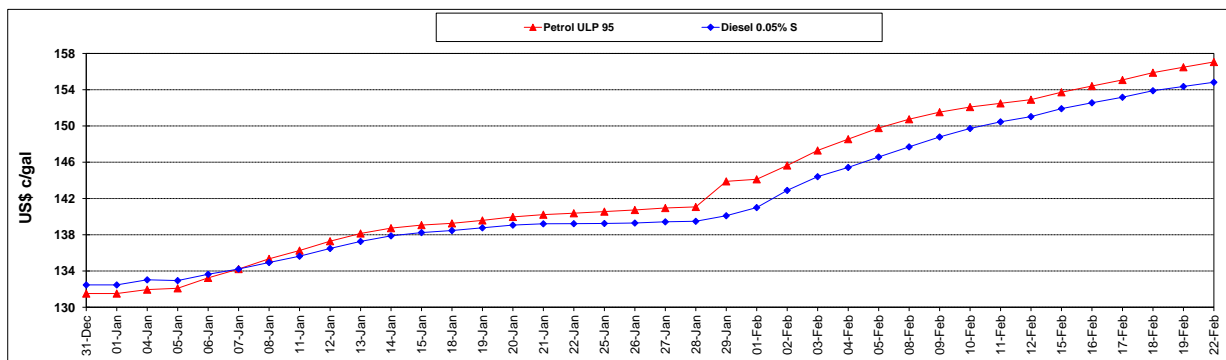
	PETROL 95	PETROL 93	DIESEL 0.05%	DIESEL 0.005%	ILL. PAR.
- MOVEMENT IN INTERNATIONAL PRODUCT PRICES	(72.898)	(70.775)	(63.037)	(64.538)	(56.162)
- MOVEMENT IN EXCHANGE RATE	13.261	13.077	13.133	13.208	12.719
AVERAGE UNIT OVER/(UNDER) RECOVERY 29/01/2021 - 22/02/2021	(59.637)	(57.699)	(49.905)	(51.330)	(43.442)

### R/\$ EXCHANGE RATE - (R/\$14.8800 - 22/02/2021)

#### EXCHANGE RATE USED IN BASIC FUEL PRICE



#### INTERNATIONAL PRODUCT PRICES OF BASKET USED IN BASIC FUEL PRICE



#### BASIC FUEL PRICE IN SA CENTS PER LITRE

